

LOCATION MAP



# OKLAHOMA TURNPIKE AUTHORITY

## CONTRACT No. T-26612A TURNER TURNPIKE

PROPOSED SH-66 INTERCHANGE  
AT TPU 68.20  
CREEK COUNTY  
STATE JOB NO. 35686(06)  
ORIGINAL OTA CONTRACT NO: T-MC-107B3

OKLAHOMA TURNPIKE AUTHORITY				
SECTION ENGINEER	SECTION	CONTRACT NUMBER	SHEET NO.	TOTAL SHEETS
GARVER		T-MC-107B3		
DESCRIPTION		REVISIONS		DATE

INDEX OF SHEETS  
SEE SHEET 2

### MANDATORY TIE:

THE PROJECTS JOB PIECE NO. JP35686(04),  
JOB PIECE NO. 35686(05) AND  
JOB PIECE NO. JP35686(06)  
ARE MANDATORILY TIED  
AND SHALL BE BID ACCORDINGLY.

#### DESIGN DATA SH-66

AADT 2020 = 3700  
AADT 2045 = 5050  
DHV (2-WAY) = 515  
K (DHVAADT) = 10%  
D = 60%  
T (% DHV) = 4%  
T (% AADT) = 5%  
T<sup>4</sup> (% AADT) = 2%  
V = 65 MPH  
2hr FLEX ESMS = 1.1 M

#### DESIGN DATA RAMP A

AADT 2020 = 225  
AADT 2045 = 350  
DHV (2-WAY) = 45  
K (DHVAADT) = 13%  
D = 100%  
T (% DHV) = 4%  
T (% AADT) = 5%  
T<sup>4</sup> (% AADT) = 2%  
V = VARIES  
2hr FLEX ESMS = 0.1 M

#### DESIGN DATA RAMP B

AADT 2020 = 925  
AADT 2045 = 1350  
DHV (2-WAY) = 175  
K (DHVAADT) = 13%  
D = 100%  
T (% DHV) = 4%  
T (% AADT) = 5%  
T<sup>4</sup> (% AADT) = 2%  
V = VARIES  
2hr FLEX ESMS = 0.5 M

#### DESIGN DATA RAMP C

AADT 2020 = 225  
AADT 2045 = 350  
DHV (2-WAY) = 45  
K (DHVAADT) = 13%  
D = 100%  
T (% DHV) = 4%  
T (% AADT) = 5%  
T<sup>4</sup> (% AADT) = 2%  
V = VARIES  
2hr FLEX ESMS = 0.1 M

#### DESIGN DATA RAMP D

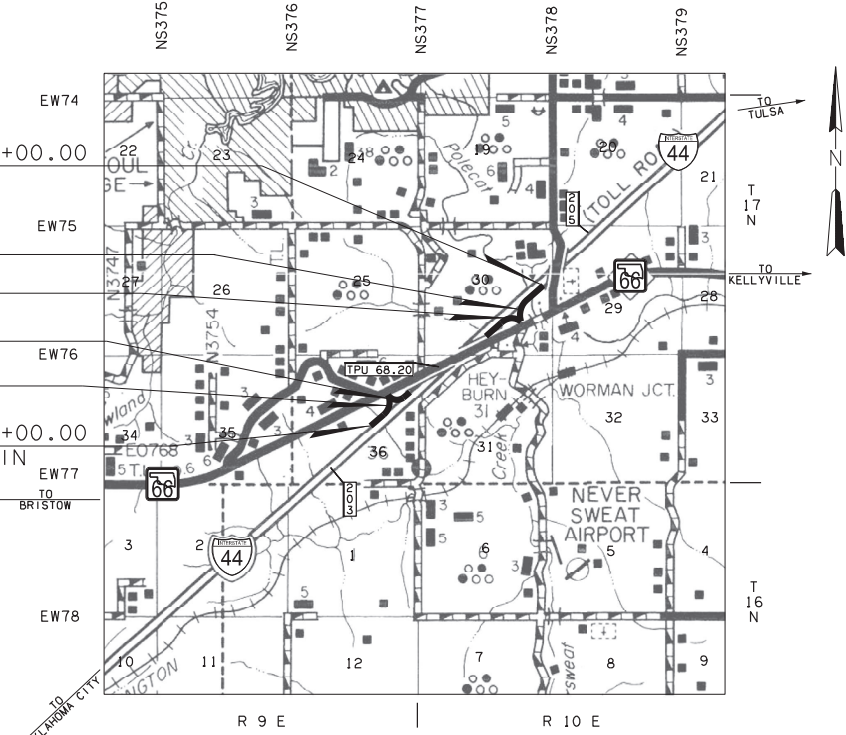
AADT 2020 = 925  
AADT 2045 = 1350  
DHV (2-WAY) = 170  
K (DHVAADT) = 13%  
D = 100%  
T (% DHV) = 4%  
T (% AADT) = 5%  
T<sup>4</sup> (% AADT) = 2%  
V = VARIES  
2hr FLEX ESMS = 0.5 M

#### SCALES

PLAN 1" = 50'  
PROFILE HOR. 1" = 50'  
VER. 1" = 10'  
LAYOUT MAP 1" = 2640'

#### CONVENTIONAL SIGNS

- PROPOSED ROAD
- RAILROADS
- RANGE AND TOWNSHIP
- SECTION LINES
- QUARTER SECTION LINES
- FENCES
- GROUND LINE
- EXISTING ROADS
- BASE LINE
- GRADE LINES
- RIGHT-OF-WAY LINES - EXISTING
- RIGHT-OF-WAY LINES - NEW
- RIGHT-OF-WAY MARKERS - IN PLACE
- RIGHT-OF-WAY MARKERS - REMOVE & RESET
- RIGHT-OF-WAY MARKERS - NEW
- CONTROLLED ACCESS
- RIGHT-OF-WAY FENCE



STA. 543+00.00  
I-44 END  
MP 204.6  
RAMP B  
RAMP A  
RAMP D  
RAMP C  
STA. 430+00.00  
I-44 BEGIN  
MP 202.5

RAMP LENGTH --- 9,784.82 FT. --- 1.853 MI.  
I-44 PROJECT LENGTH --- 11,300.00 FT. --- 2.140 MI.

EXCEPTIONS :



PREPARED BY:  
**GARVER**  
6100 SOUTH YALE,  
SUITE 1300  
TULSA, OKLAHOMA 74136  
(918) 250-5922 (VOICE)  
(918) 658-0107 (FAX)

CERTIFICATE OF AUTHORIZATION NO. 4193 P.E.,  
L.S. RENEWAL DATE: 6-30-2022

*Jenny Sallee*  
JENNY SALLEE, P.E.  
OKLA. REG. NO. 20675  
PROJECT MANAGER  
10/1/2023  
DATE

REVIEWED BY: *James M. Grubbs*  
OLSSON ASSOCIATES  
GENERAL CONSULTANT  
Oct 2, 2023  
DATE

REVIEWED BY: *Arlene Dale Mardock*  
POE & ASSOCIATES  
ACCESS PROGRAM MANAGER  
Oct 2, 2023  
DATE

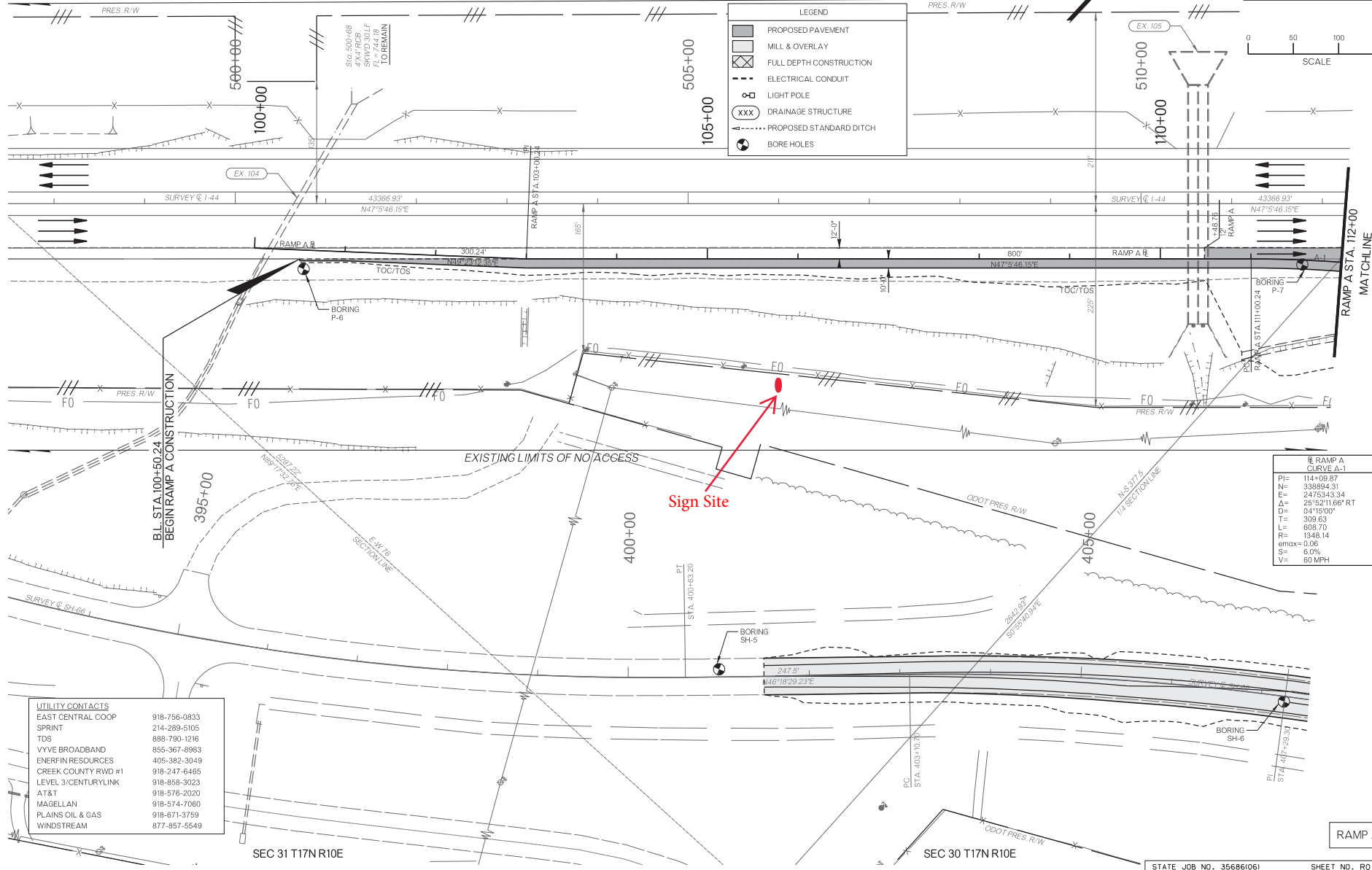
ACCEPTED BY: *Darrian Butler*  
DARRIAN BUTLER, P.E.  
OTA DIRECTOR OF ENGINEERING  
Oct 4, 2023  
DATE

SEC 30 T17N R10E

EXISTING LIMITS OF NO ACCESS

OKLAHOMA TURNPIKE AUTHORITY			
SECTION	CONTRACT NUMBER	SHEET	TOTAL
GARVER	T-10C-10783	NO.	SHEETS
DESCRIPTION		NEWSBOYS	DATE

LEGEND	
[Symbol]	PROPOSED PAVEMENT
[Symbol]	MILL & OVERLAY
[Symbol]	FULL DEPTH CONSTRUCTION
[Symbol]	ELECTRICAL CONDUIT
[Symbol]	LIGHT POLE
[Symbol]	DRAINAGE STRUCTURE
[Symbol]	PROPOSED STANDARD DITCH
[Symbol]	BORE HOLES



RAMP A CLEVE (A-3)	
PI=	114+09.87
N=	338894.31
E=	2475343.34
Δ=	25°32'11.66" RT
D=	04°15'00"
T=	309.63
L=	638.70
R=	1348.14
e <sub>max</sub> =	0.06
S=	6.0%
V=	60 MPH

UTILITY CONTACTS	
EAST CENTRAL COOP	918-756-0833
SPRINT	214-289-5105
TDS	688-790-1216
VYVE BROADBAND	855-367-8983
ENERFIN RESOURCES	405-382-3049
CREEK COUNTY RWD #1	918-247-6465
LEVEL 3/CENTURYLINK	918-858-3023
AT&T	918-576-2020
MAGELLAN	918-574-7060
PLAINS OIL & GAS	918-671-3759
WINDSTREAM	877-857-5549

SEC 31 T17N R10E

SEC 30 T17N R10E

STATE JOB NO. 356861061 SHEET NO. R010

# CREEK CO I-44 RAMP

**Legend**

-  8051 Sign site
-  Existing Alignment
-  On-Off Ramps
-  Shoulder

